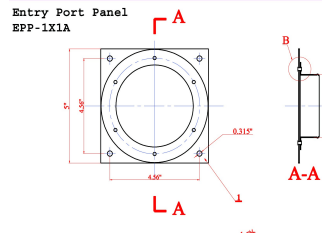




Entry Port Panels



Features:

- Heavy duty aluminum construction
- Quality Powder Coated Exterior
- Comes with Weather caps and mounting hardware
- High quality packaging to prevent mishaps
- Specification sheets available

| Part Number | Hole Count | Size |
|-------------|------------|-----------------------|
| EPP-1x1A | 1 | 5" X 5" |
| EPP-1x1B | 1 | 7" X 7" |
| EPP-1x2 | 2 | 1' 3-1/2" X 9-1/2" |
| EPP-1x3 | 3 | 1' 8" X 9-1/2" |
| EPP-1x4 | 4 | 2' 1-1/2" X 9-1/2" |
| EPP-1x6 | 6 | 3' 1/2" X 9-1/2" |
| EPP-2x2A | 4 | 11" X 11" |
| EPP-2x2B | 4 | 1' 5-1/2" X 1' 5-1/2" |
| EPP-2x3 | 6 | 1' 11" X 1' 5-1/2" |
| EPP-2x4 | 8 | 2' 1-1/2" X 1' 5-1/2" |
| EPP-2x6 | 12 | 3' 3-1/2" X 1' 5-1/2" |
| EPP-3x3 | 9 | 1' 11" X 1' 11" |
| EPP-3x4 | 12 | 2' 1-1/2" X 2' 1-1/2" |
| EPP-4x4 | 16 | 2' 1-1/2" X 2' 1-1/2" |
| EPP-4x6 | 24 | 3' 3-1/2" X 2' 7" |
| EPP-6x6 | 36 | 3' 3-1/2" x 3'-5-1/2" |